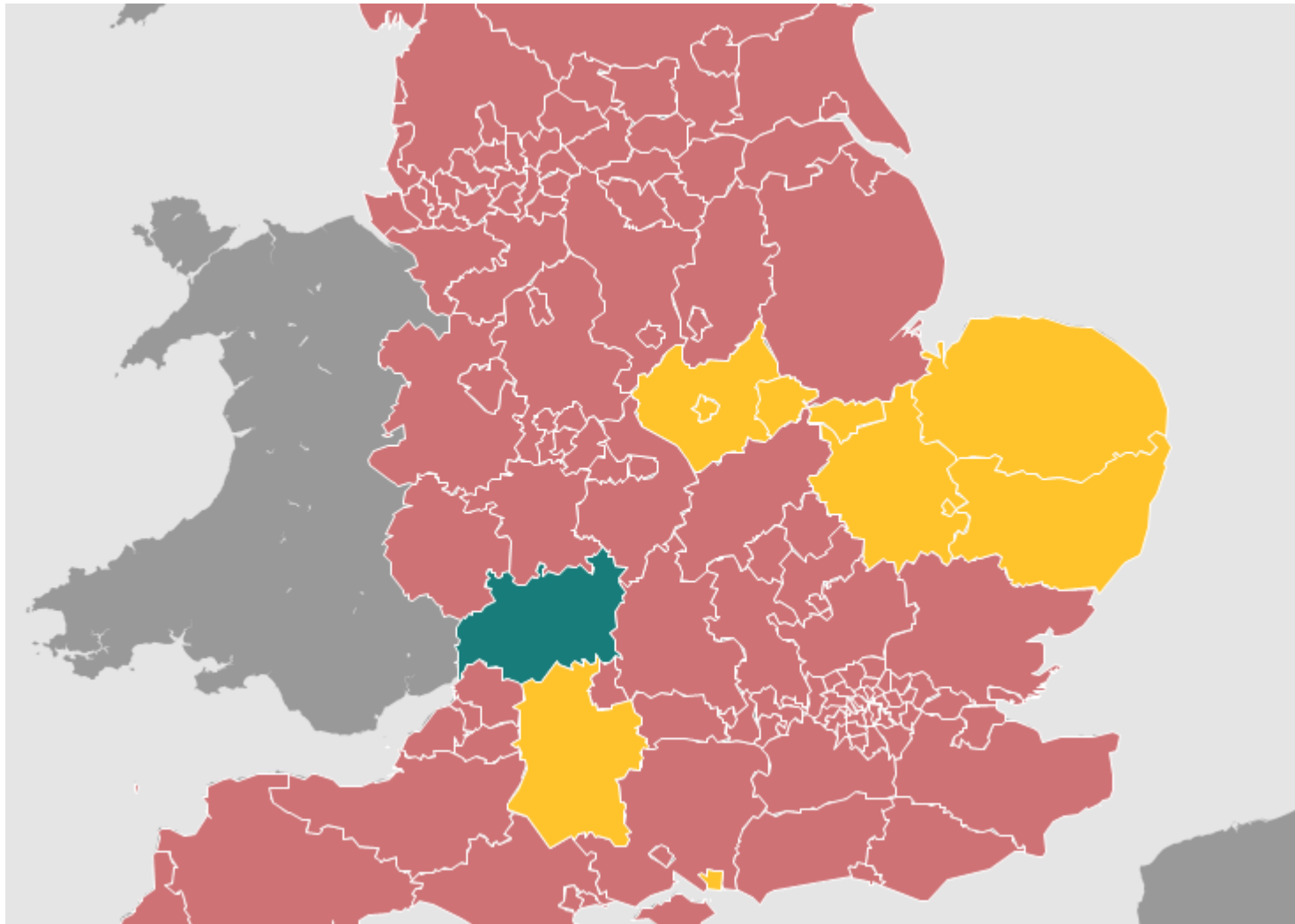


Sec 136 – The Impact of Introducing an NHS Place of Safety

David Pugh
Independent Consultant MHA & MCA
Dr Jim Laidlaw
Consultant Psychiatrist

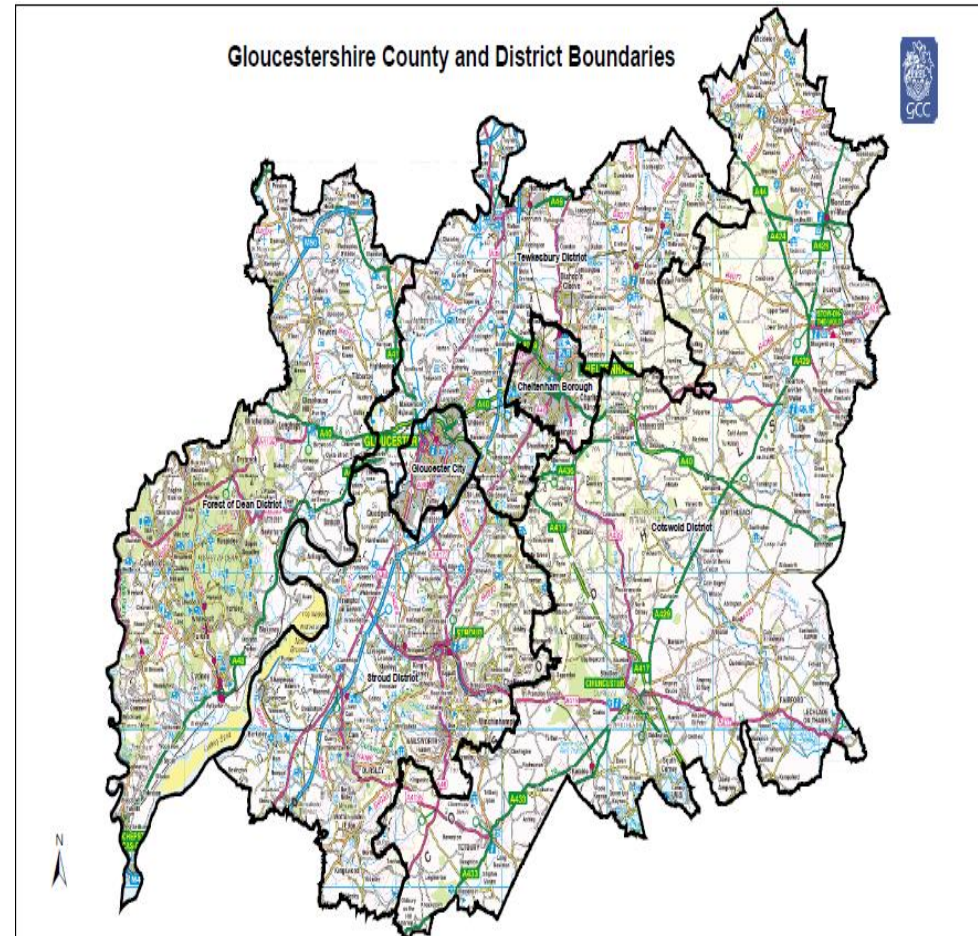
Content of Presentation

- ❑ Gloucestershire POS history
- ❑ Local research - pre-Maxwell Suite
- ❑ The Maxwell Suite Evaluation – 5 years of running a health based POS; 2009-13
- ❑ What we have learned



Gloucestershire Characteristics

- ❑ Population 605,654
- ❑ Numbers of 85+ living alone rising fast
- ❑ High quality diverse & historic environment, a rural/urban mix
- ❑ BME 4.3% of population, plus 3.1% 'White-other'
- ❑ Diverse population extremes of affluence & deprivation
- ❑ Life expectancy varies, 84.4 for women in Cotswolds to 78 for men in Gloucester City
- ❑ County Council, 6 District Councils & 264 parish/town councils
- ❑ 6 MPs



Place of Safety

In the
beginning
there was
Coney Hill
Hospital



Place of Safety

Next was there
was the police
cell



Criteria for a Health POS

- Available 24 hrs a day
- Easily accessible from the main population centres
- 'Neutral' non-stigmatising setting
- Suitable for rare occasions when there is an extended period of stay
- Comfortable and safe
- Adequately staffed with access to extra staff in the case of behavioural disturbance

Place of Safety

Now there is
the Maxwell
Suite (+ police
cell)



Local S136 Research

1. Use of Sec 136 in Gloucestershire during 2003-2006 (MSL, 2010)
2. Responses of different professional groups to use of S136 in Glos (MSL, 2011)
3. Detainee & carer perspective (MSL, 2011)
4. Setting up a health based POS in Glos (JPIC 2009)
5. Evaluation of a health based POS (Maxwell Suite) in Glos (submitted to MSL 2014)

Key findings on use of Sec 136 in Glos (2002 – 2006)

- ❑ An average of 192 detentions a year (176-203), 32.6 per 100k population
- ❑ In contrast to other studies BME over-representation only marginal for Afro-Caribbean males, 94% detainees white
- ❑ 1/3rd admitted
- ❑ Acts of self harm common (55%) in contrast to acts/threats of violence (28%)
- ❑ Evidence of intoxication low (16%)
- ❑ 58% male, 42% female
- ❑ Commonest age range 35-44 yrs
- ❑ Busiest period 18.00 – 24.00 hrs
- ❑ 9% repeat detainees

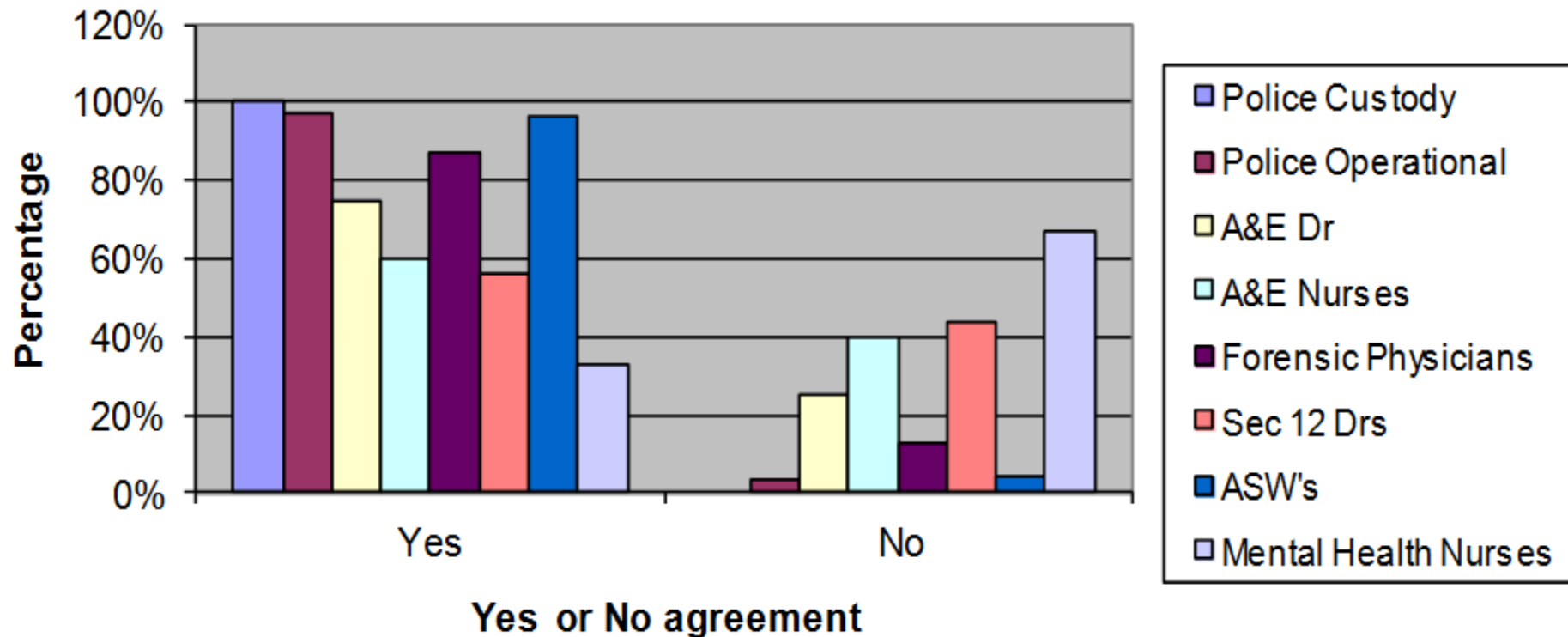
Attitudes & Beliefs of Professional Groups

Method: Semi-structured questionnaire to key professional groups, followed up by Focus Groups (response rate of 59% n= 223/378):

Who:

- A&E Drs and Nurses
- Approved Social Workers
- Police Operational Officer & Custody Sergeants
- Section 12 Drs
- Mental Health Nurses
- Forensic Physicians

Do you think there should be an alternative to the Police Station as the only POS?



More than just a number' – views of S136 detainees

- 204 Subjects of 136 between Jan 06 – July 07
- Total number invited to participate:
 - Detainees: 190
 - *Known to MHS: 86 (49%)*
 - *N/K to MHS: 104 (51%)*
- Total number interviewed: 18
 - *Known to MHS: 7*
 - *N/K to MHS: 11*
- Total number of carers interviewed: 6
- Participant characteristics:
 - Gender: 44% male (8) 56% female (10)
 - Age: 22 – 70 years, highest modal range 41-50 years – 40% (n=7)
 - Ethnicity: White British

Detainees' experiences in a cell

- ❑ Treated as a criminal - *'I was handcuffed and put in a police van and taken straight from the van into the cells. I was terrified.'*
- ❑ Emotional distress - *'Not a nice place to stay, I didn't feel safe, it almost felt like I was being punished for having a mental illness, as if I wasn't allowed to feel depressed..'*
- ❑ Lack of attention to medical needs
- ❑ Lack of provision of info to detainees & carers
- ❑ Vulnerability/risk - *'I was very upset; everyone keeps telling me I am an alcoholic. I don't think I have a mental disorder, but I knew I had a drink problem, I got to the stage where I thought no-one cares about me.'*

S136 Detentions in Gloucestershire February 2009 – December 2013

	Total number of Section 136 Detentions	Maxwell Centre as sole POS	Police cells as sole POS	Transfers between POS's
2009*	301	203	54	44
2010	367	257	61	49**
2011	413	291	61	61
2012	386	272	46	68
2013	351	267	31***	53
Total	1818	1290	253	275

Total of 1818 detentions = a mean figure of 31.8 per month(range 12-39)

Maxwell Centre alone = 1290, including transfers = 1565

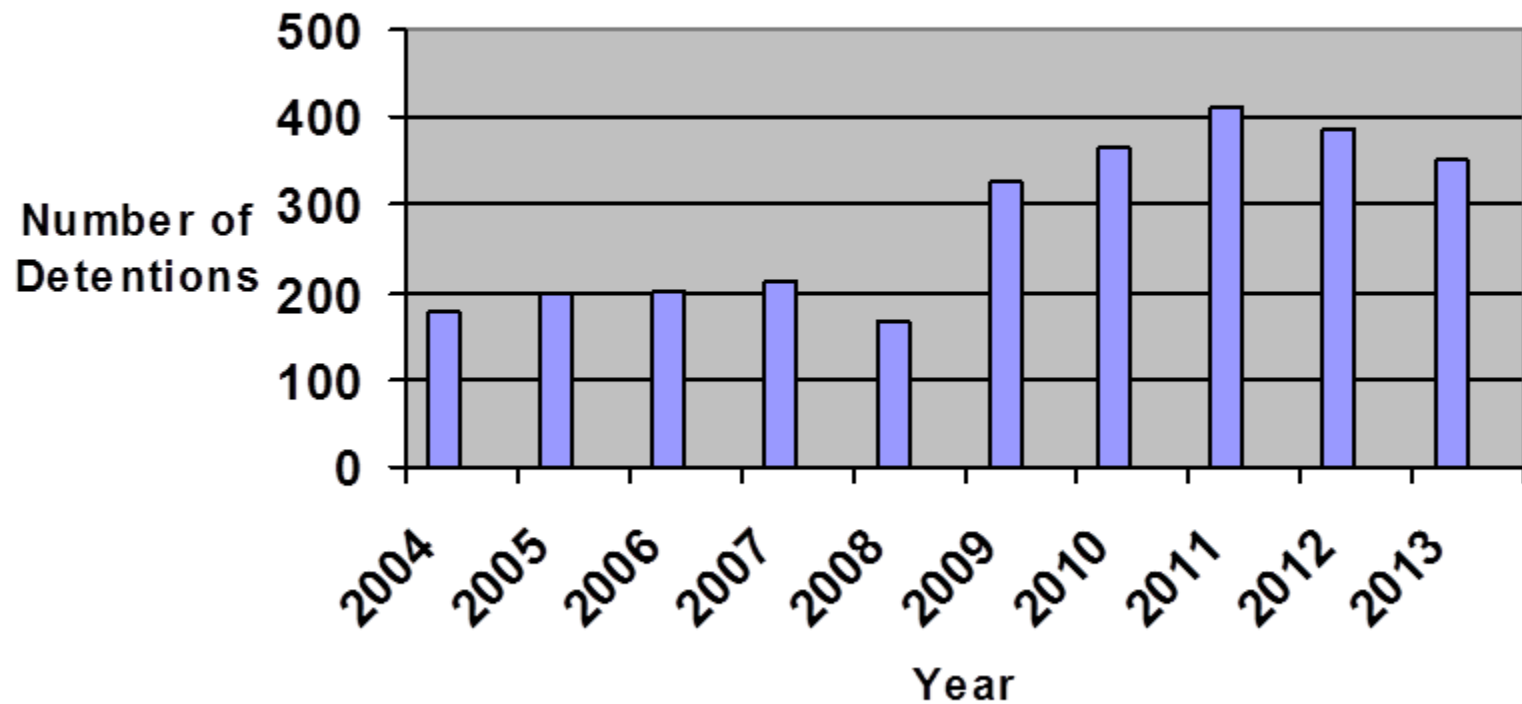
Total passing through police cells = 528

* 11 months data

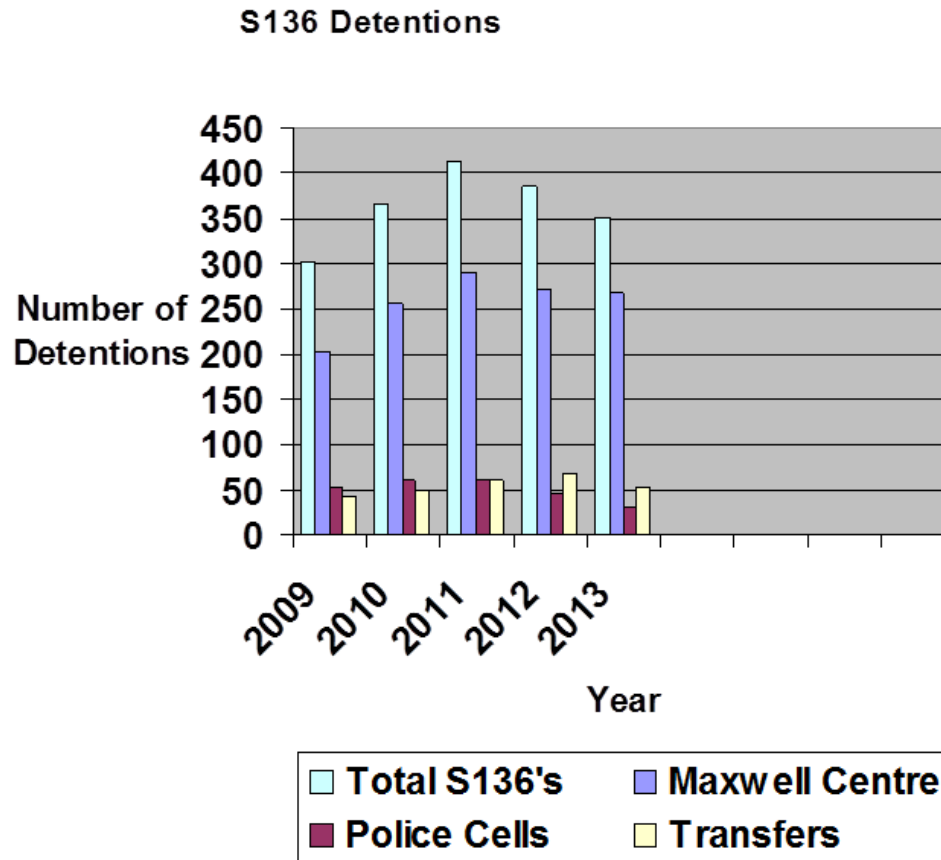
** 11 months data for this figure (49)

*** 11 mths data (missing January)

S136 Detentions



S136 detentions per year in Gloucestershire 2009-2013 by POS and including transfers



Why the 60% increase?

- 1) A reflection of national trends?
- 2) Social & political factors – reduced tolerance of odd or risky behaviour in public?
- 3) The opening of the Maxwell Suite?

POS Detentions & Transfers 2009 - 2013

	2009	2010	2011	2012	2013
Maxwell Centre	82.1%	83.3%	85.2%	96.9%	91.2%
Police Cells	32.6%	30.0%	29.5%	29.6%	23.9%
Transfers	14.6%	13.4%	14.8%	17.6%	15.1%

Local S136 Policy on use of Police Cells

- Unmanageably violent or may become so, or
- No NHS POS is available (e.g. Centre is full), or
- Where the person concerned is under the influence of alcohol or drugs to the extent that they are not fit for assessment

Key Demographic & Detention Data

- ❑ 55.3% male
- ❑ Age range under 16 yrs – over 65 with most frequent age band 35-44 yrs (21.1%)
 - ❑ 6.3% under 18 & 1.3% under 16 yrs
 - ❑ 3.4% over 65 yrs
- ❑ Marginal over-representation of Black/African/Caribbean/Black British (1.7% vs 0.9%)
- ❑ Mean duration of detention – 4.4 hrs with mean time in Maxwell Suite 3.9 hrs
- ❑ 42.4 % detained 'out of hours' between 17.00 – 09.00 & 27.4% at wk end
- ❑ 28.2% admitted to hospital 14.2 % informally
- ❑ 57.1 % discharged with no follow up

Repeat Detainees 2014 (3mths)

- ❑ 94 detentions in the 1st 3 mths of 2014 with 20 previously detained:
 - 10 once
 - 7 three times
 - 4 more than 6 times & all known to services
- ❑ So, 31% of the 94 detentions created by 4 detainees with more than 6 detentions each
- ❑ Only 20% of the 20 were male
- ❑ All seven detained more than 3 times were female with a diagnosis of PD

Outcomes

- ❑ Whilst number of S136 rises the % further detained is falling
- ❑ Glos: 28% admitted to hospital; 14.2% informal & 13.9% under MHA
- ❑ 42.9% required hospital care or follow-up so over 50% did not require specialist MH intervention
- ❑ Ethical issue of deprivation of liberty + use of scarce MH resources?

Other Issues

- Young People
- MCA
- Conveying
- Staffing

What have we learned?

- Emphasis on research & evidence based practice
- Put subjects of S136 at centre
- Engage commissioners
- Develop key stakeholder allies
- CJS/Health & Social Care Forum
- Monitor/review
- Persistence!

Thank you for listening